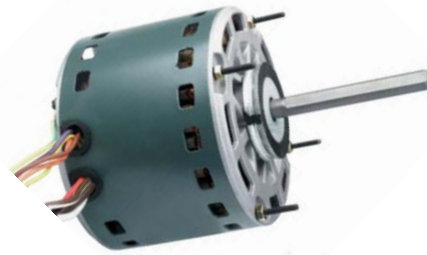


Multi-Horsepower Furnace Blower Motors

Having a Multi-Horsepower blower motor on your service truck can help in an emergency situation when you don't have a specific HP motor with you on that 10:00pm cold winter night call. So pick up a few to have on hand!



- Multi-Horsepower
- 5-1/2" diameter
- 2-1/2" resilient rings
- Reversible
- 39 frame
- Open end shields
- Extended mounting studs
- Capacitor requirement on motor label
- Overload protection
- Fan duty, continuous air
- Class B insulation



Model	SF#	HP	Volts	RPM	Speeds	Rotation		
3463	MOT11725	1/2, 1/3, 1/4, 1/5, 1/6	115	1075	4	CCW/CW		
3466	MOT11728	3/4, 1/2, 1/3, 1/4, 1/5	115	1075	4	CCW/CW		

Capacitors Guide for #3463 - 1/2 HP

SF#	Motor HP	Capacitor	Speeds to Use	FLA
CPT00230	1/2	10/370	All Speeds	6.2
CPT00120	1/3	5/370 or 7.5/370*	All Speeds	6.1
CPT00120	1/4	5/370 or 7.5/370*	Med-Hi Med-Lo:Lo	4.4
CPT00120	1/5	5/370 or 7.5/370*	Med-Lo:Lo	3.2
CPT00120	1/6	5/370 or 7.5/370*	Lo	2.4

Capacitor Guide for #3466 - 3/4 HP

SF#	Motor HP	Capacitor	Speeds to Use	FLA
CPT00316	3/4	20/370	All Speeds	8.1
CPT00230	1/2	10/370	All Speeds	6.6
CPT00230	1/3	10/370	Med-Hi Med-Lo:Lo	4.6
CPT00230	1/4	10/370	Med-Lo:Lo	3.8
CPT00230	1/5	10/370	Lo	3.1

* using a 7.5/370 will result in apx. 10% stronger motor